



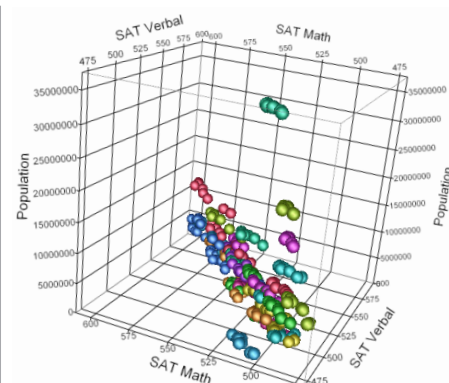
## JMP® Software: Academic Licensing

Brought to you by SAS, the world leader in software for statistics and analytics

**JMP®.** This is the same fully-featured JMP software used in corporations and industries worldwide. JMP software's built-in features serve the computing needs of courses ranging from introductory to advanced at both the undergraduate and graduate levels. Courses including statistical methods, regression, linear models, design of experiments, quality control, multivariate analysis and data mining are some of the most popular courses adopting JMP. Available for Windows, Macintosh and Linux. JMP 64-bit Edition is also available.

**JMP® Student Edition.** This is a feature-limited version of JMP designed for first-year courses in statistics. Whether students are enrolled in business, engineering, behavioral, general, or public health statistics courses, this edition will contain all the statistics and graphics needed to complete the course. JMP Student Edition is designed for ease of use and is available, at a nominal price, only when packaged with textbooks from leading publishers. Available for Windows, Macintosh and Linux.

**JMP® Genomics.** This is the same complete genomics software used in corporate and government research labs worldwide. JMP Genomics provides powerful desktop analytics for the huge data sets common to microarray, proteomics and genetic marker studies. Its easy-to-use interface and over 100 analytic genomics procedures make it the ideal software tool for research and teaching courses in bioinformatics or statistical genetics. Available for Windows.

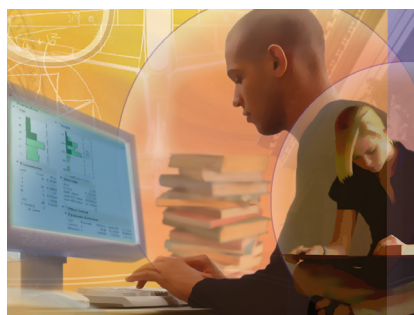


*3D scatterplot shows SAT scores by state, colored by geographic regions.*

### Why JMP®?

- **Learn statistics in an easy and fun way.** Point-and-click interface selects the appropriate analyses based on the types and numbers of variables you select.
- **Generate an appropriate graph from every analysis.** Statistics display in the same window as the graph and hover help assists in interpreting the statistics.
- **Interact with data and graphs.** Click on points in a graph to highlight the data on the data table, and vice versa.
- **Hit the ground running.** JMP Starter defines analyses and then takes you to the analysis with the correct setup already in place.
- **Access SAS® resources.** Weekly and recorded Webcasts on Getting Started with JMP, white papers, conferences, podcasts and more.

[www.jmp.com/academic](http://www.jmp.com/academic)



**STATISTICAL  
DISCOVERY.  
FROM SAS.**

## Licensing JMP®

### Department or Campus Annual License

Ideal for classrooms, labs and other moderate- to heavy-use single- and multi-user post-secondary teaching and research settings.

- Unlimited use by eligible department or campus users including faculty, students and researchers.
- SAS' award winning 24/7 technical support included through your site's department or campus contact.
- Free and automatic maintenance updates and version upgrades during the term of the license.
- First year and renewal fees at a fraction of the corporate costs.
- Centralized billing and payment.
- Available through SAS.

### Single-User Perpetual License

Just right for researchers who want their own copy.

- One-time cost for a version that never expires.
- Free maintenance updates within version.
- SAS' award winning 24/7 technical support included.
- Discounted upgrades.
- Available through SAS.

### Single-User 6-Month or 12-Month License

Ideal for students who need their own copy for a course or short period.

- Short term licenses with a student's budget in mind.

- Convenient electronic download.
- Students may re-license to extend their use of JMP during their academic tenure.
- Available through e-academy.com.

### Single-User 12-Month JMP® License Coupled with Server-Based SAS® License (SAS® OnDemand for Academics: JMP)

Perfect for courses using JMP, SAS or both.

- Provides JMP with built-in integration and access to SAS at a very low price.
- Allows instructors to store data files on the server.
- Convenient electronic download.
- Available through SAS.

## Licensing JMP® Student Edition

### Single-User 12-Month License

Ideal for post-secondary students taking introductory statistics courses.

- Streamlined version of JMP with all the statistics covered in first-year statistics courses.
- Bundled, by request of professor, with textbooks sold through college bookstores.
- Available through textbook publishers McGraw-Hill, Cengage, W.H. Freeman, Pearson, and John Wiley & Sons.

### Schoolwide 60-Month License

Designed for secondary school AP statistics courses that need a multiyear student license.

- No limit to the number of classroom, teacher or other-site academic computers.
- Very low cost; one-time, five-year fee.
- Available through SAS.

## Licensing JMP® Genomics

### Department or Campus Annual License

Can be scaled for use by researchers in a single academic lab, within a department or across the campus.

- The full power of the JMP statistical discovery platform, enhanced with SAS analytics tailored for heavy-duty processing of genomics data sets.
- More than 100 analytic procedures for genetic, microarray and proteomics research.
- Available through SAS.

**Let us help you identify the options that will work best for you.**

#### In the US, contact:

Kathleen Watts  
JMP Academic Representative  
919-531-1144  
Kathleen.Watts@sas.com

#### Outside the US:

Product and Licensing options may differ. Contact your local SAS office for complete information.

